

Production and Consumption of N₂O Beneath Cropland and Prairie

Annual NZ Soil Science Society Meeting 2013
Palmerston North, NZ
R Phillips

With contributions by Donna Giltrap, Andrew
McMillan, Mikko Kirschbaum

Summary 4 years of observations

- Concentrations and modelled fluxes of N₂O tend to be greater in sub-soils (60 cm depth) than near-surface soils (15 cm depth).
- Synthetic fertilizer was not used, but belowground N₂O concentrations were considerably higher for planted lucerne crop than prairie for similar soils at neighbouring sites.
- Variable rates of production and consumption with depth may explain the disjunction between belowground and surface flux data.

These data are still being analysed...

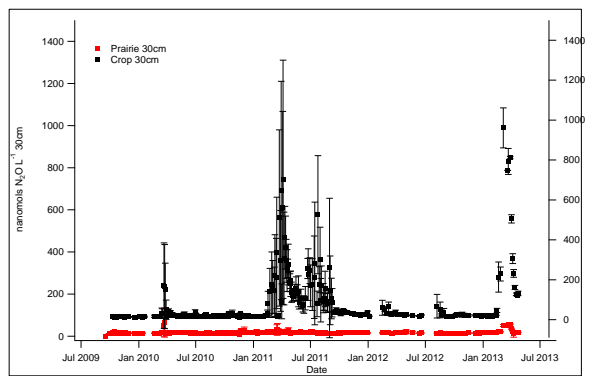
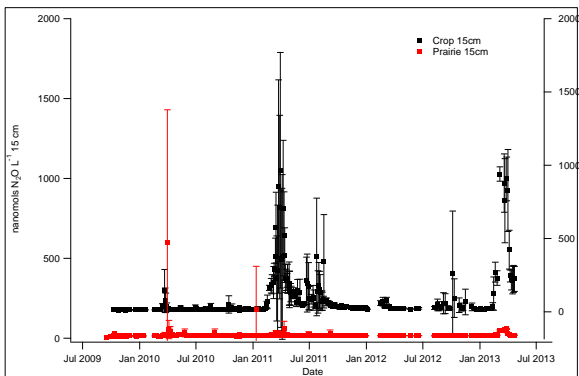
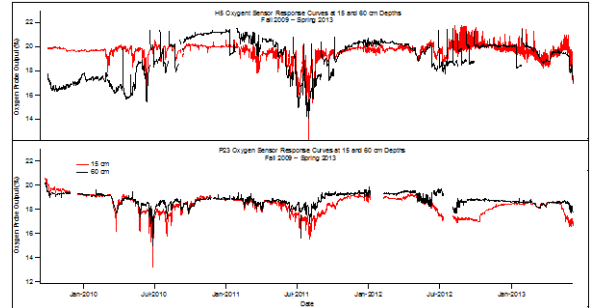
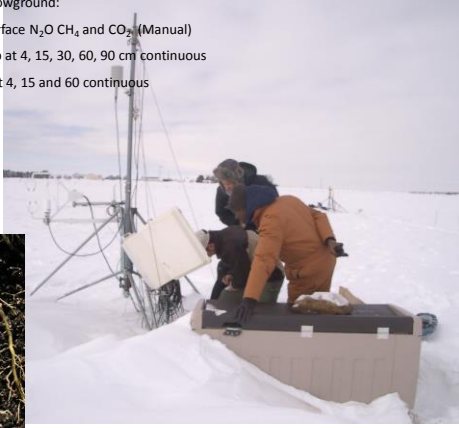


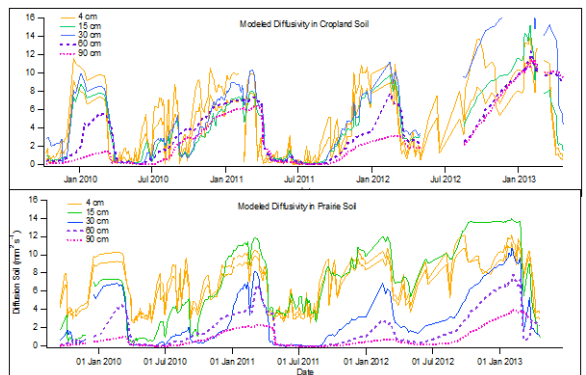
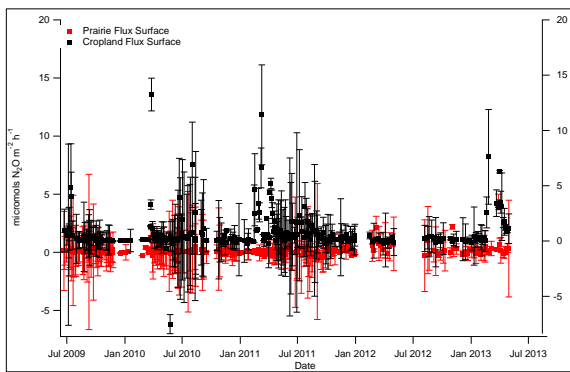
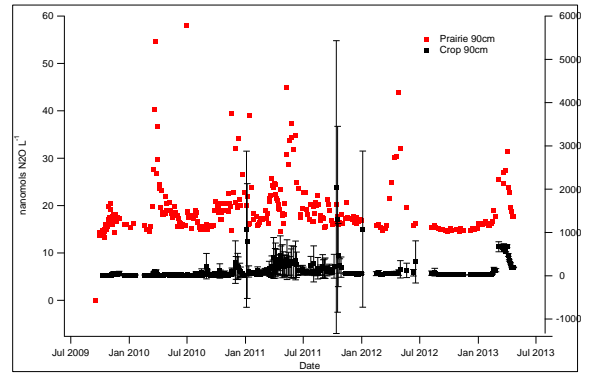
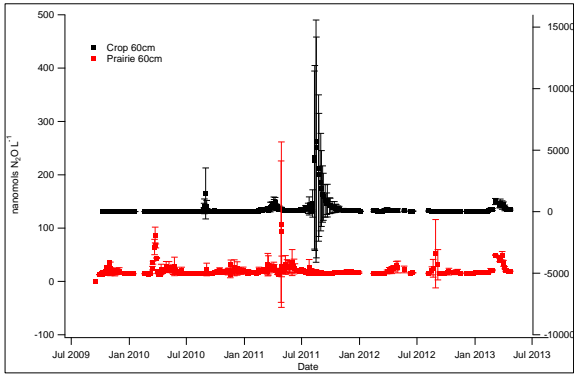
Measurements Belowground:

Surface and sub-surface N₂O, CH₄, and CO₂ (Manual)

Soil moist and temp at 4, 15, 30, 60, 90 cm continuous

Soil O₂, RH and BP at 4, 15 and 60 cm continuous





FINAL NOTE

Thank you for welcoming me to NZ

